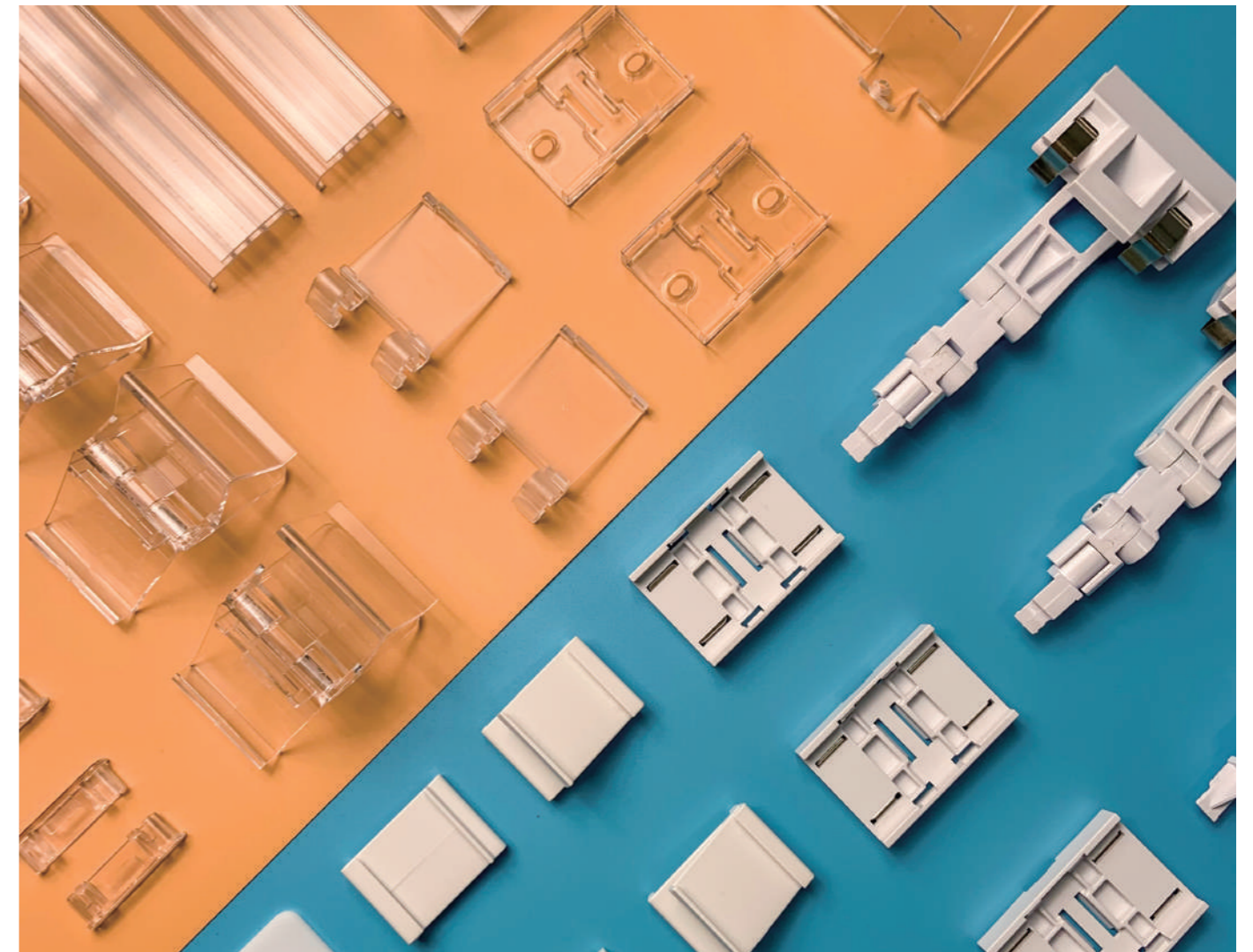




Katalog ESL

Electronic Shelf Labels

Příslušenství



ONTIME China
HANGZHOU ONTIME I.T. CO.

ONTIME Europe
RAZAK SECURITY SOLUTIONS
Tyršova 787
Nučice u Rudné
Czech Republic
info@razak.cz
lenka.maxova@razak.cz
Mobile + 420 602 706 698
www.razak.cz

ONTIME Middle-East
ONTIME SMART SYSTEM LLC

Rail



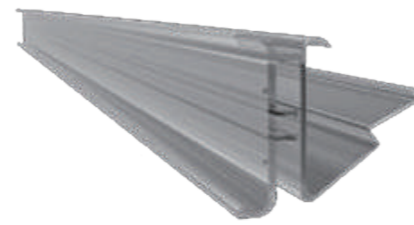
SR6124

Use with ESL

Description: Custom available | Material: PVC

Product use demonstration:
<https://sy1.iknowmuch.com/ishelf/imgs/esl/SR6124.mp4>

Rail



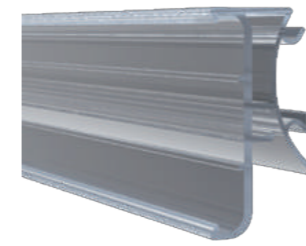
SR6125

Use with ESL

Description: Custom available | Material: PVC

Product use demonstration:
<https://sy1.iknowmuch.com/ishelf/imgs/esl/SR6124.mp4>

Rail



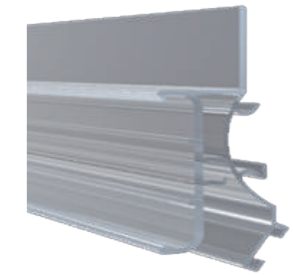
SR6143

Use with ESL

Description: Custom available | Material: PVC

Product use demonstration:
<https://sy1.iknowmuch.com/ishelf/imgs/esl/SR6124.mp4>

Rail



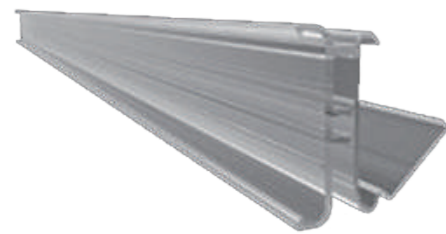
SR6144

Use with ESL

Description: Custom available | Material: PVC

Product use demonstration:
<https://sy1.iknowmuch.com/ishelf/imgs/esl/SR6124.mp4>

Rail



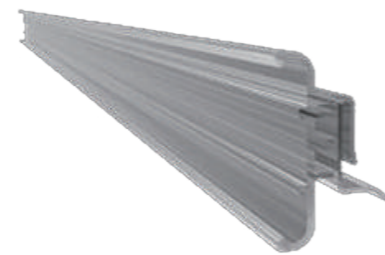
SR6126

Use with ESL

Description: Custom available | Material: PVC

Product use demonstration:
<https://sy1.iknowmuch.com/ishelf/imgs/esl/SR6124.mp4>

Rail



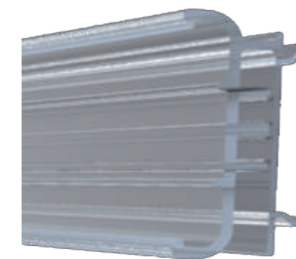
SR6127

Use with ESL

Description: Custom available | Material: PVC

Product use demonstration:
<https://sy1.iknowmuch.com/ishelf/imgs/esl/SR6124.mp4>

Rail



SR6147

Use with ESL

Description: Custom available | Material: PVC

Product use demonstration:
<https://sy1.iknowmuch.com/ishelf/imgs/esl/SR6124.mp4>

Rail



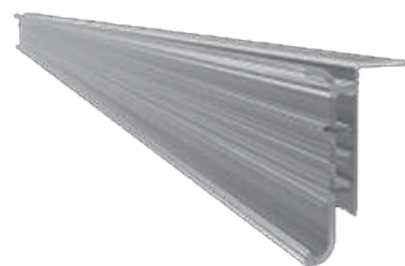
SR6145

Use with ESL

Dimension (mm) : 44.2*13.2*L | Description: Custom available

Product use demonstration:
<https://sy1.iknowmuch.com/ishelf/imgs/esl/SR6124.mp4>

Rail



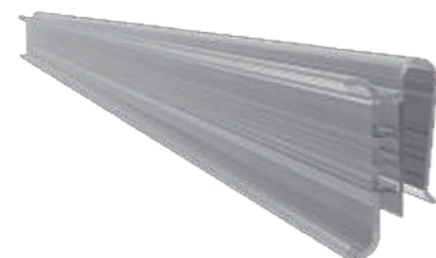
SR6128

Use with ESL

Description: Custom available | Material: PVC

Product use demonstration:
<https://sy1.iknowmuch.com/ishelf/imgs/esl/SR6124.mp4>

Rail



SR6129

Use with ESL

Description: Custom available | Material: PVC

Product use demonstration:
<https://sy1.iknowmuch.com/ishelf/imgs/esl/SR6124.mp4>

Rail



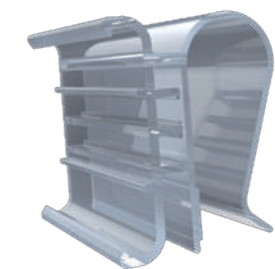
SR6142

Use with ESL

Dimension (mm) : 50*39*L | Description: Custom available

Product use demonstration:
<https://sy1.iknowmuch.com/ishelf/imgs/esl/SR6124.mp4>

Clip



SR6146

Use with ESL

Dimension (mm) : 37.5*25.8*L | Description: Custom available

Product use demonstration:
<https://sy1.iknowmuch.com/ishelf/imgs/esl/SR6124.mp4>

Clip



SR6148 Use with ESL

Dimension (mm) : 37.9*9.7*29

Product use demonstration:
<https://sy1.iknowmuch.com/ishelf/imgs/esl/SR6148.mp4>
(For shelf of 1-2.2mm thickness)

Clip



SR6149 Use with ESL

Dimension (mm) : 40.4*20.6*29

Product use demonstration:
<https://sy1.iknowmuch.com/ishelf/imgs/esl/SR6149.mp4>
(For shelf of 1-2.2mm thickness)

Tool



SR6121 Use with ESL

Dimension (mm) : 80.8*47*5.8

Product use demonstration:
<https://sy1.iknowmuch.com/ishelf/imgs/esl/SR6121.mp4>
(Detacher / Battery case opener)

Small Stand



SR6100 Use with ESL

Dimension (mm) : 78*70*52

Product use demonstration:
<https://sy1.iknowmuch.com/ishelf/imgs/esl/SR6100.mp4>

Angle Adjuster



SR6114 Use with ESL

Dimension (mm) : 16.2*13.2*23

Product use demonstration:
<https://sy1.iknowmuch.com/ishelf/imgs/esl/SR6114.mp4>

Rail End



SR6112 Use with ESL

Dimension (mm) : 32*14*11

Product use demonstration:
<https://sy1.iknowmuch.com/ishelf/imgs/esl/SR6112.mp4>

Small Stand for 4.2"



SR6100-2 Use with ESL

Dimension (mm) : 80*55*60

Product use demonstration:
<https://sy1.iknowmuch.com/ishelf/imgs/esl/SR6100-2.mp4>

Stand for 4.2 Inch ESL



SR6101 Use with ESL

Dimension (mm) : 61.6*62.3*84.6

Product use demonstration:
<https://sy1.iknowmuch.com/ishelf/imgs/esl/SR6101.mp4>

Ice Pick



SR6102 Use with ESL

Dimension (mm) : 79*54*128

Product use demonstration:
<https://sy1.iknowmuch.com/ishelf/imgs/esl/SR6102.mp4>

Hook Clip



SR6133 Use with ESL

Dimension (mm) : 36*20.7*52

Product use demonstration:
<https://sy1.iknowmuch.com/ishelf/imgs/esl/SR6133.mp4>

Stand



SR6135 Use with ESL

Dimension (mm) : 96.5*73.7*72.1

Product use demonstration:
<https://sy1.iknowmuch.com/ishelf/imgs/esl/SR6135.mp4>
(For 5.8 inch & 7.5 inch ESL)

Stretched Stand



SR6108 Use with ESL

Dimension (mm) : 180*160*500

Product use demonstration:
<https://sy1.iknowmuch.com/ishelf/imgs/esl/SR6108.mp4>

Clip



SR6104

Use with ESL

Dimension (mm) : 43*41*40

Product use demonstration:

<https://sy1.iknowmuch.com/ishelf/imgs/esl/SR6104.mp4>

(For shelf of 12~25mm thickness)

Clip



SR6105

Use with ESL

Dimension (mm) : 43*41*26

Product use demonstration:

<https://sy1.iknowmuch.com/ishelf/imgs/esl/SR6105.mp4>

(For shelf of 3~10mm thickness)

Bar Holder



SR6138

Use with ESL

Dimension (mm) : 100*48*52.2

Product use demonstration:

<https://sy1.iknowmuch.com/ishelf/imgs/esl/SR6138.mp4>

(With rings for 7.5 inch ESL)

Clamp



SR6118

Use with ESL

Dimension (mm) : 54.5*43*140.8

Product use demonstration:

<https://sy1.iknowmuch.com/ishelf/imgs/esl/SR6118.mp4>

(With 9 or 11 mm slot)

Holder Mount on Wall



SR6150

Use with ESL

Dimension (mm) : 55*38*10

Product use demonstration:

<https://sy1.iknowmuch.com/ishelf/imgs/esl/SR6150.mp4>

Magnetic Holder



SR6151

Use with ESL

Dimension (mm) : 55*37*10.5

Product use demonstration:

<https://sy1.iknowmuch.com/ishelf/imgs/esl/SR6151.mp4>

Shelf Talker



SR6141

Use with ESL

Dimension (mm) : 34.6*25.1*13

Product use demonstration:

<https://sy1.iknowmuch.com/ishelf/imgs/esl/SR6141.mp4>